

CERTIFICATE OF LOCATION OF GOVERNMENT CORNER

County of Anoka State of Minnesota

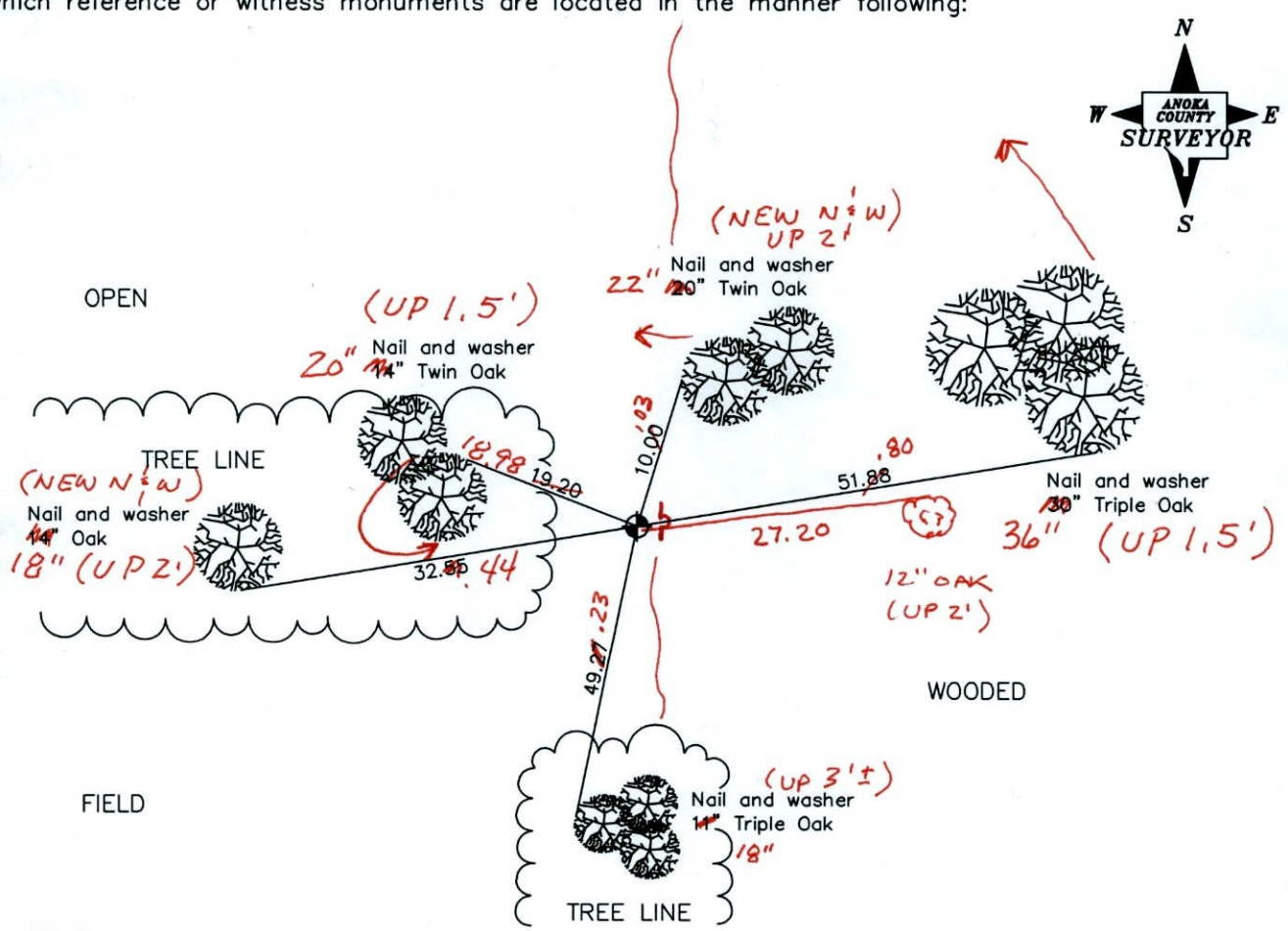
East 1/4 Corner of Sec. 12 Township 32 Range 23

I hereby certify that on the 30th day of April, 1965, I found the described corner which was evidenced by a concrete monument

and I further certify that to perpetuate the location of said corner, I did, at the exact location thereof, place a permanent marker consisting of a cast iron monument (UP 0.3')

~~COULD USE SIGN & POST~~ ADDED SIGN & POST ON EASTERLY SIDE OF MON (4-27-11)

which reference or witness monuments are located in the manner following:



*BK-SS
TAPEP*

Revised date

12/31/90
11/20/91
8/20/96
3-18-11

N.A.D. 1983 Coordinates
(1996 adjustment)

County Project Coordinates	State Plane Coordinates
Northing <u>187769.1920</u>	Y _____
Easting <u>532043.0894</u>	X _____

Date 1/28/02

CERTIFICATE OF LOCATION OF GOVERNMENT CORNER

County of Anoka

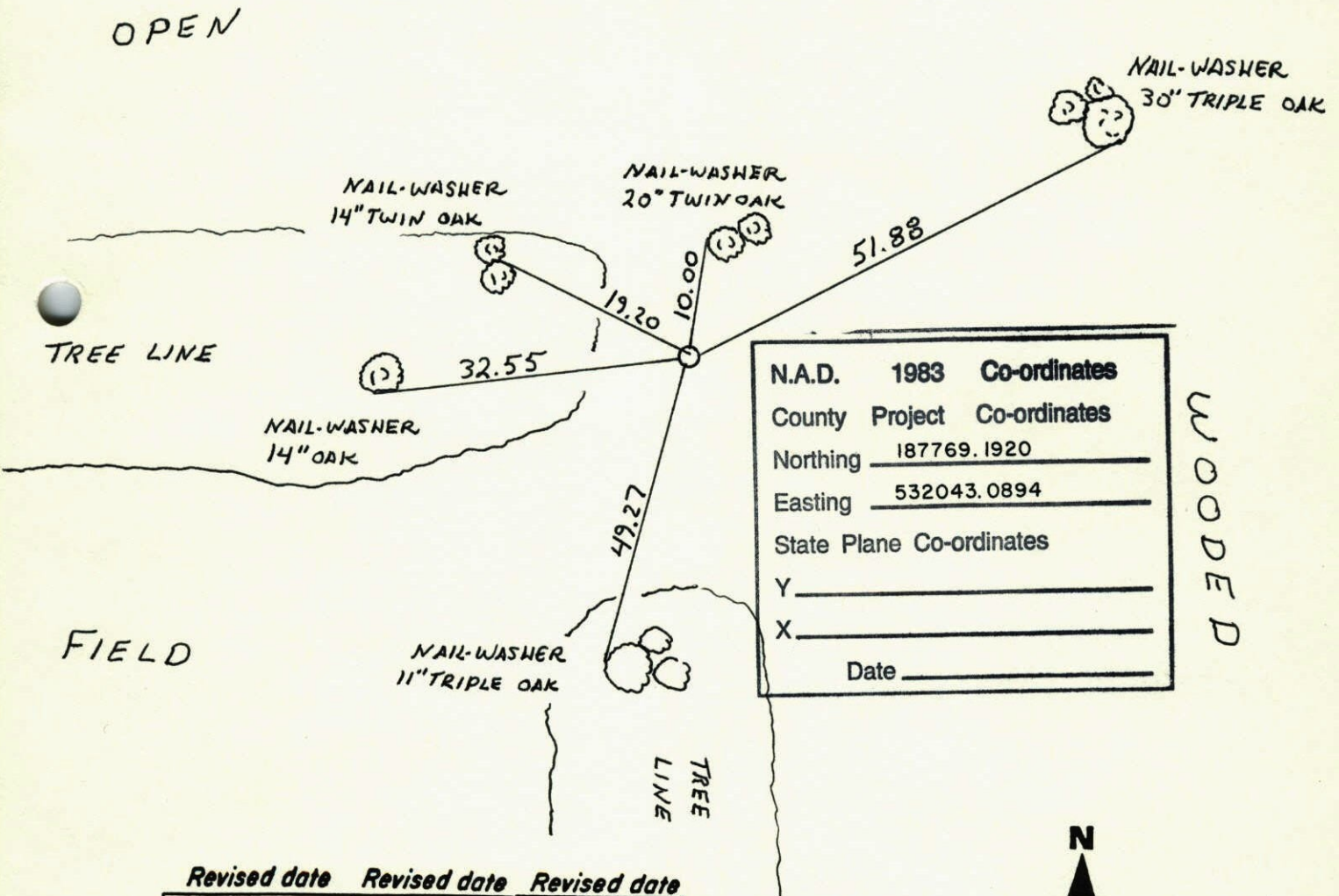
State of Minnesota

EAST 1/4 Corner of Sec. 12 Township 32 Range 23

I hereby certify that on the 30TH day of APRIL, 1965, I found the described corner which was evidenced by CONCRETE MONUMENT

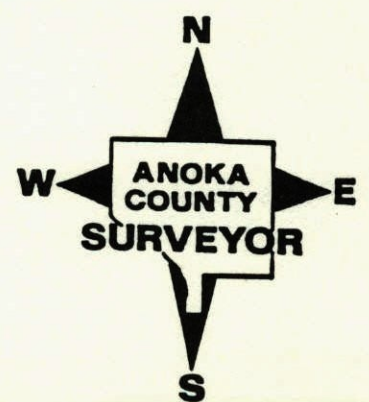
and I further certify that to perpetuate the location of said corner, I did, at the exact location thereof, place a permanent marker consisting of CAST IRON MONUMENT

which reference or witness monuments are located in the manner following:



N.A.D.	1983	Co-ordinates
County	Project	Co-ordinates
Northing		<u>187769.1920</u>
Easting		<u>532043.0894</u>
State Plane Co-ordinates		
Y		_____
X		_____
Date _____		

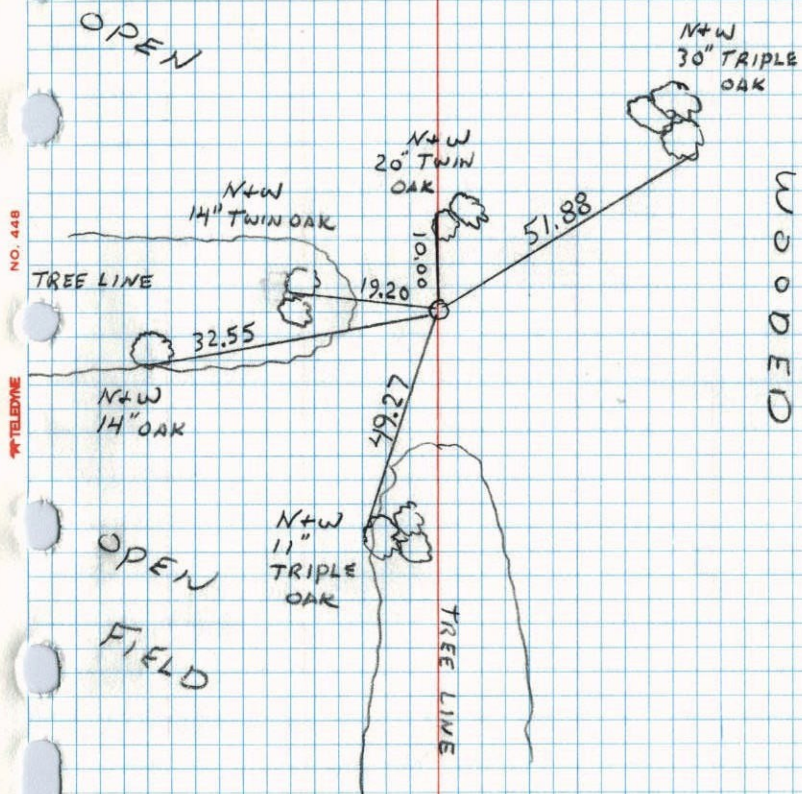
Revised date	Revised date	Revised date
12-31-90		
11-20-91		
8-20-96		



EAST 1/4 CORNER SECTION 12 T32 R23

RETIRED CAST IRON

11-20-91
W. LARSON
B. KLUM
M. STEWART



E 1/4 Cor. Sec 12 T32 R23

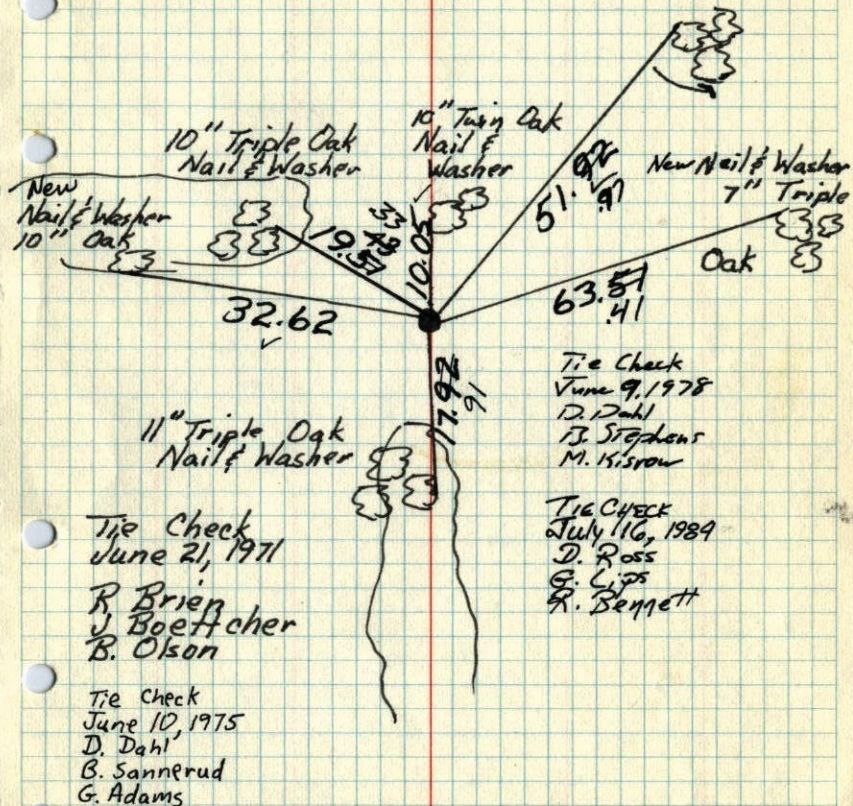
Replaced broken concrete Mon.

with cast Iron Monument up 0.1'

April 30, 1965

J. Oliver
H. Larson

New Nail & Washer
15" Triple Oak



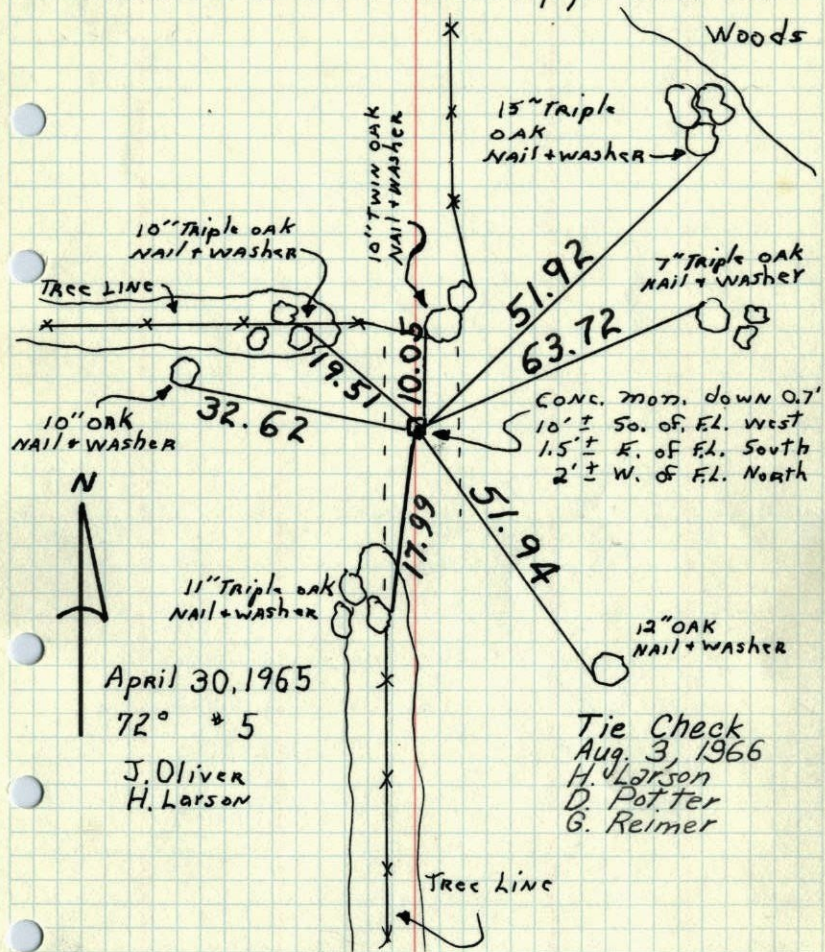
TEMPERATURE CORRECTED
AND HORIZONTALLY
TAPED MEASUREMENTS

ROLAND W. ANDERSON
COUNTY SURVEYOR
ANOKA COUNTY, MINNESOTA

E 1/4 Cor. Sec. 12 T32 R23

Found broken off 4" Sq. concrete

Mon. down 0.7'. Set iron pipe on N. side

TEMPERATURE CORRECTED
AND HORIZONTALLY
TAPED MEASUREMENTSROLAND W. ANDERSON
COUNTY SURVEYOR
ANOKA COUNTY, MINNESOTA

E 1/4 Cor. Sec. 12, T32, R23

Found broken off 4" Sq. Concrete

Mon. down 0.7'. Set I.P. on No. side.

